

The **T-MINUS**™ System, T-MINUS . . . counting down your score®

T-MINUS™ 400 Series Golf Putter

Retail/Web Pricing

for Conventional (Short) and Long Shafts

Plan	Description	Prices	
		Short	Long
1	one any weight/loft/lie/length	\$129.00	\$139.00
2	two pack, any weight/loft/lie/length	\$119.00	\$129.00

Freight

Prepaid UPS Ground (continental USA)

Tender

COD, Money Order

Contact

M & M Technologies, Inc.

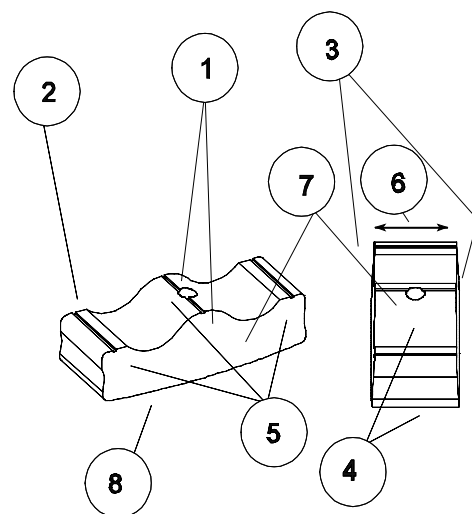
P.O. Box 399

Lexington, SC 29071-0399

Phone (803) 238 - 2801

Fax: (803) 356 - 7530

Website: www.m-mtech.com



400 Series Golf Putter

- zero torque** design with large "sweet spot" to eliminate twist at take away and impact
- machined billet head** for accuracy and uniformity
- soft, **machined aluminum faces** for "feel" and ball control
- anodized** (except soft faces) to reduce eye glare
- exclusive heel & toe insert weighed, center-shafted, center-balanced** head design
- matched weight sets** available for "fast" or "slow" greens with different lofts & same lies
- OR matched face loft and shaft lie sets** available with different weights
- constant radius sole** for any ball lie with minimum scuff area
- Apollo shafts, Lamkin Crossline Grips (except Perma-Wrap on long shafts)

400 Series - T-MINUS™ Putter

Nominal Width	Nominal Total Weight	Available Std Loft	Available Std Lie	Available Std Shaft Length	Model No.
inches	grams	degrees	degrees	inches	model width loft - lie/shaft length
1	430 g	3°, 6°	15°, 18°, 21°, 24°	31" to 38"	443-15/31 to 446-24/38
1-¼	490 g	3°, 6°	15°, 18°, 21°, 24°	31" to 38"	453-15/31 to 456-24/38
1-¼+	515 g	3°, 6°	15°, 18°, 21°, 24°	31" to 38"	453-15sp/31 to 456-24sp/38
1-½	550 g	3°, 6°	15°, 18°, 21°, 24°	31" to 38"	463-15/31 to 466-24/38
1-¾	610 g	3°, 6°	15°, 18°, 21°, 24°	31" to 38"	473-15/31 to 476-24/38
1-¾	710 g	0°, 3°, 6°	10° long shaft	45-½" to 51-½"	470-10/45-½ to 476-10/51-½

400 Series Available in Dual Right/Left Style

M & M Technologies, Inc. reserves the right to change suppliers and specifications as it deems necessary.